

Santa Clara County  Office of Education

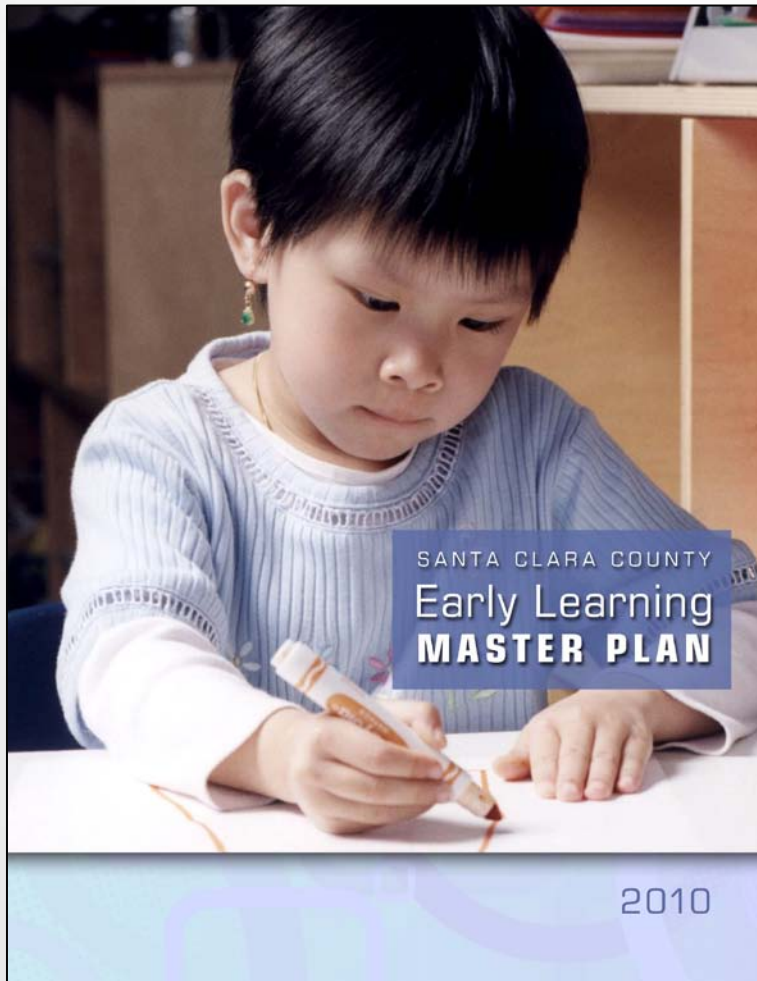
## Early Learning Initiatives

Mountain View, Los Altos, Los Altos Hills Challenge Team

November 14, 2013

Lisa Kaufman, Ph.D. Early Learning Services

# Agenda



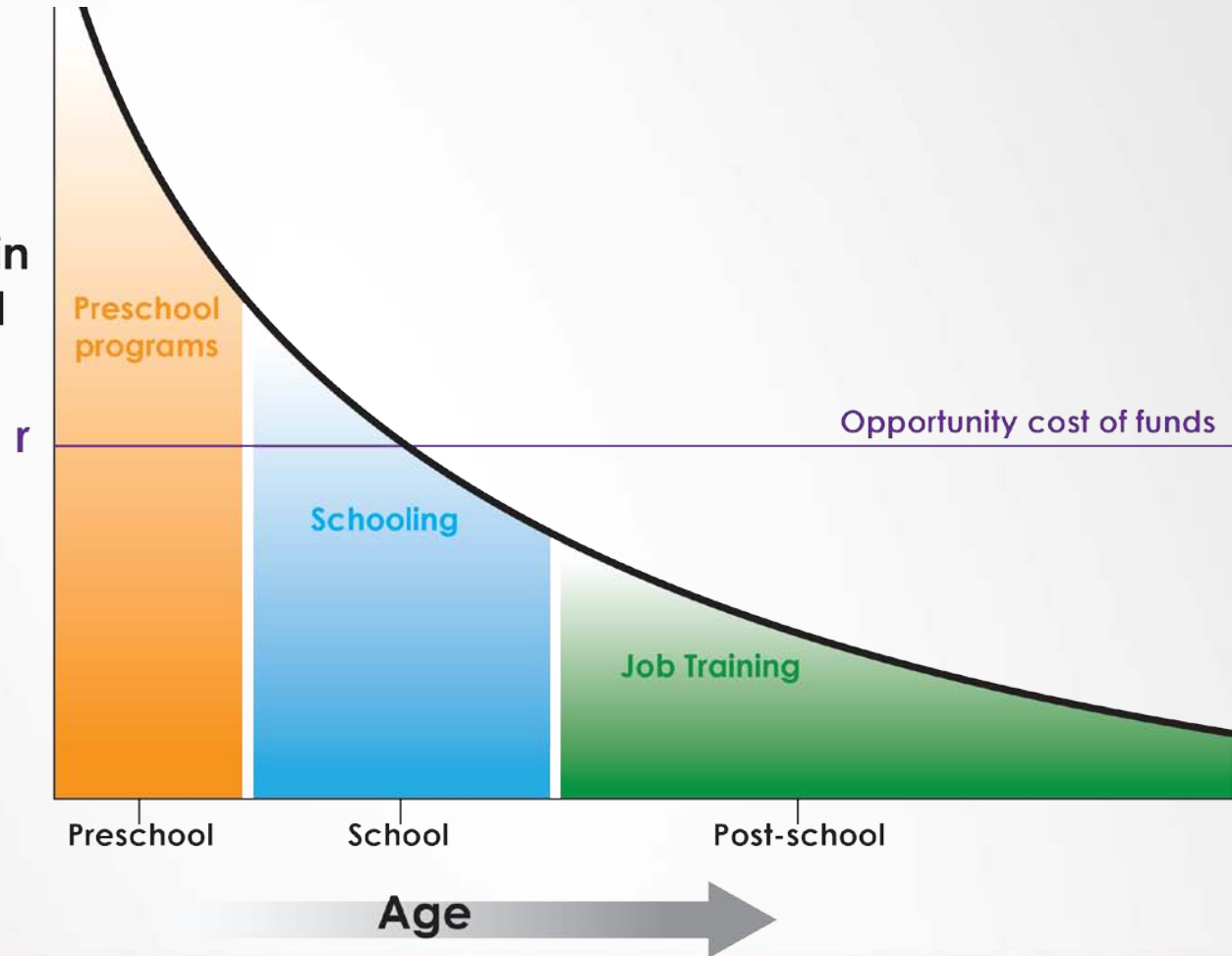
- Early Learning Value
- Early Learning Master Plan (ELMP) Overview
- ELMP Strategic Efforts
- Sharing the Story: Highlights and Future Directions
- Questions/Discussion



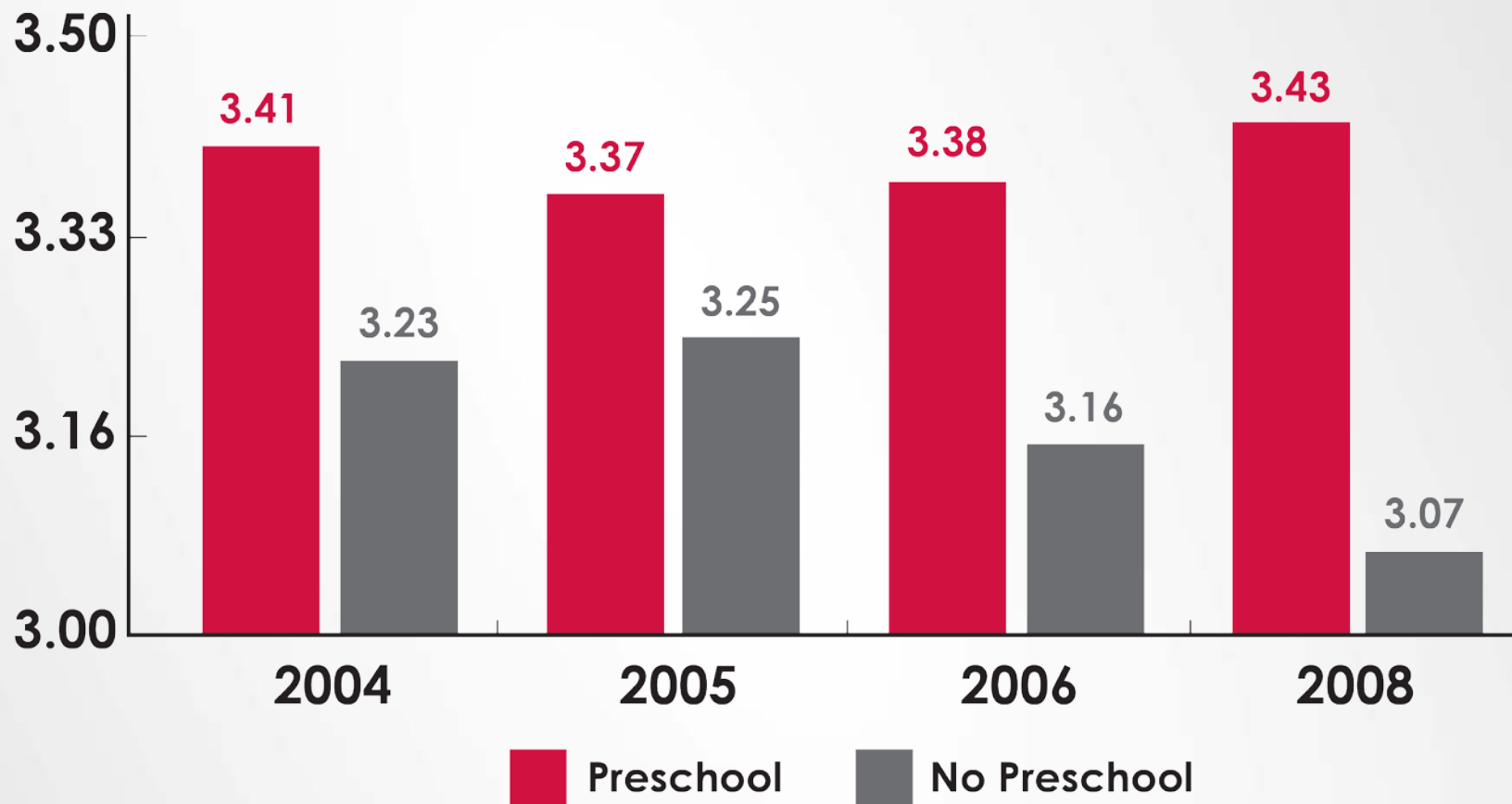
# Early Learning Value Closing the Opportunity Gap

Rates of return  
to investment in  
human capital

James Heckman,  
winner of the  
2000 Nobel Prize  
in economics,  
demonstrates  
the return on  
investment for  
ECE.

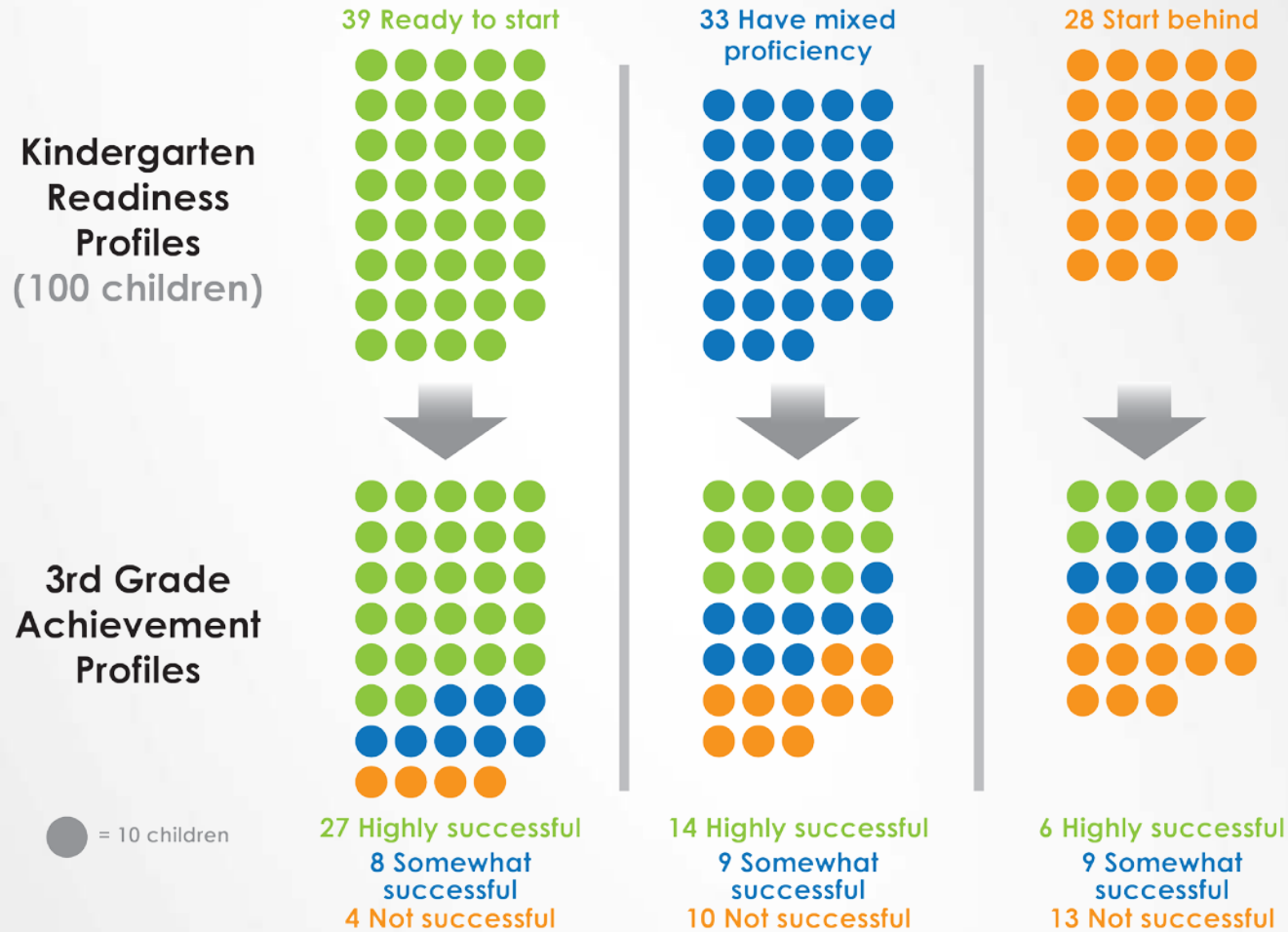


# Early Learning Value Impact on Kindergarten Readiness



Source: Santa Clara County Partnership for School Readiness

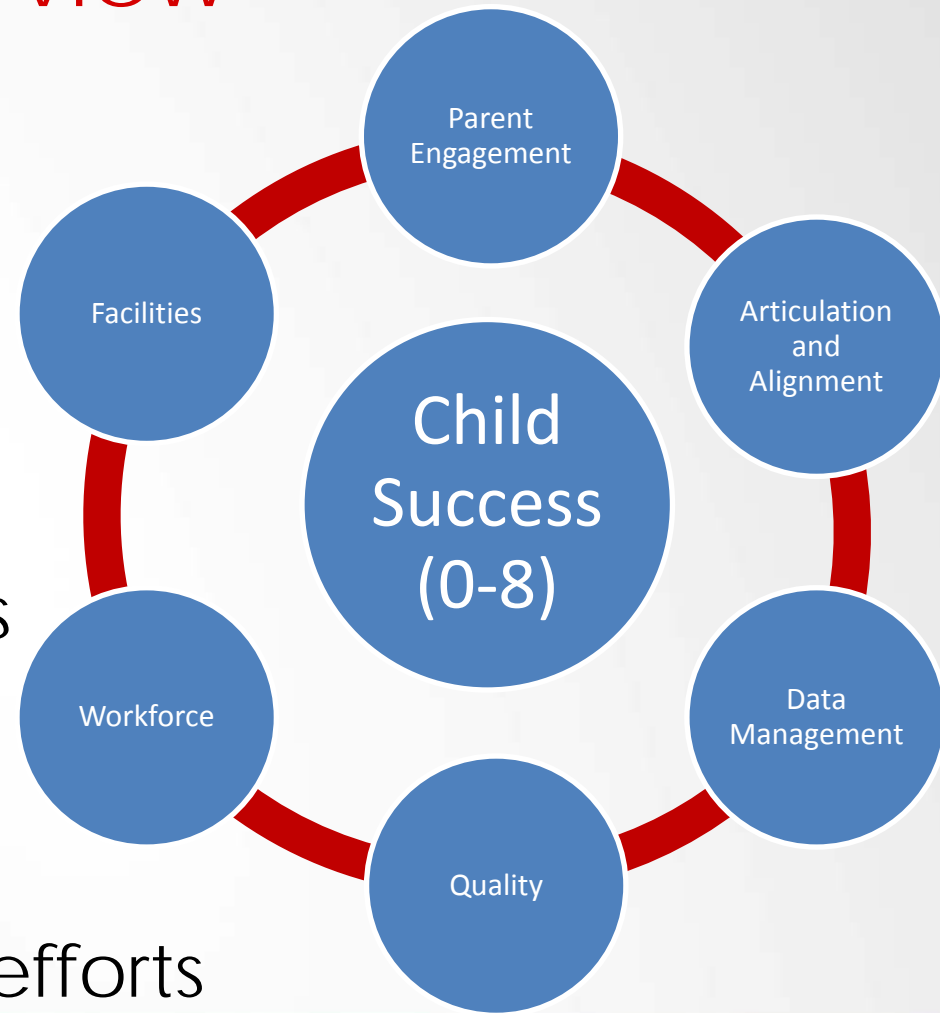
# Early Learning Value Impact on Third Grade Achievement



Source: Santa Clara County Partnership for School Readiness (2012)

# Early Learning Master Plan (ELMP) Overview

- Early learning strategy for SJ/SV2020
- Birth through third grade focus
- 2-, 5- and 7-year goals in six strategic areas
- Shared leadership, leveraging of existing efforts



# Early Learning Master Plan (ELMP) Overview

- Engaging diverse stakeholders
- Collaborating and sharing leadership
- Leveraging existing assets and initiatives
- Enhancing existing systems
- Sustaining efforts



# Early Learning Master Plan (ELMP) Strategic Efforts

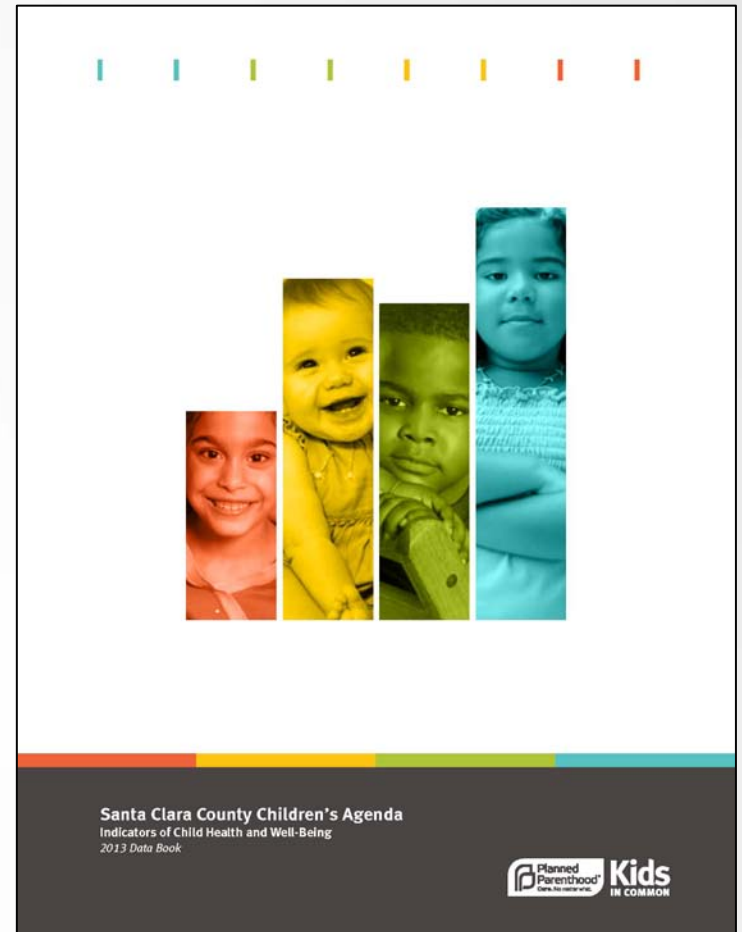


- Three key types
  - Public awareness events and reports
  - Broad-based initiatives
  - Strategic area initiatives



# ELMP Strategic Efforts Events and Reports

- Reports
  - Children's Agenda Data Book (2013)
  - Local Planning Council Community Needs Assessment (2013)
  - LPC Policy Briefs (2013)
- Events
  - Children's Summit (2013)
  - Ready Kids, Ready Schools Conference (2012)



# ELMP Strategic Efforts Broad-Based Initiatives

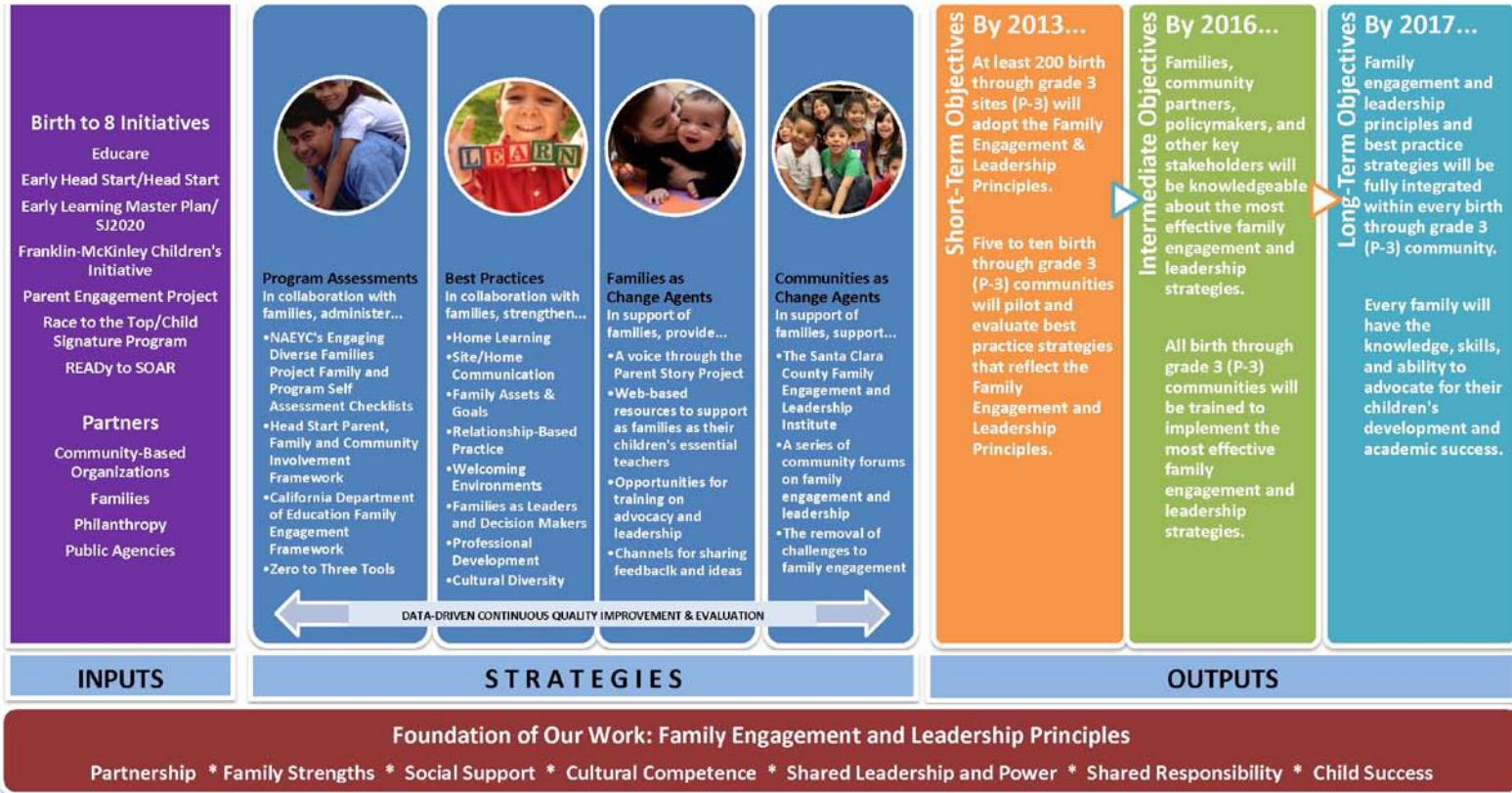
- Signature efforts that cut across all strategic areas:
  - Educare of California at Silicon Valley
  - Race to the Top – Early Learning Challenge Fund
  - Transitional Kindergarten
  - READy to SOAR
  - Strong Start Early Learning Initiative



# ELMP Strategic Efforts Family Engagement and Leadership

## Santa Clara County Early Learning Master Plan Family Engagement and Leadership Logic Model

OUR VISION: Families, educators, and community and business leaders will together support and sustain an early system that ensures every child birth to age eight has the opportunity to learn in an environment of such high quality that each child's ability to succeed is secured, the achievement gap is eliminated, and students, families, the community, and the local economy benefit.



# ELMP Strategic Efforts

## Family Engagement and Leadership

- Guiding principles
  - Partnership
  - Families as strengths/assets
  - Social support
  - Cultural competence
  - Shared leadership and power
  - Shared responsibility
  - Child success
- Family engagement and leadership institute

For families with children, birth through third grade, and the school and early learning community programs and partners that support them

**SAVE THE DATE**  
**APRIL 27, 2013**

**Santa Clara County Family Engagement and Leadership Institute**

**Keynote Speakers**

  
Dr. Karen L. Mapp  
Harvard Graduate School of Education

  
Jerry Tello  
National Latino Father and Family Institute

**Saturday, April 27, 2013**  
8:30 a.m. – 3:00 p.m.

at the  
Santa Clara County Office of Education  
San Jose, CA


**Sponsors**

# ELMP Strategic Efforts Articulation and Alignment

- Ready Kids, Ready Schools Conference
- *Building Early Success with "Ready Schools"*
  - Importance of integrating preschool and early elementary efforts
  - Rubric to facilitate collaboration, identify shared goals

SANTA CLARA COUNTY EARLY LEARNING MASTER PLAN  
Building Early Success with "Ready Schools"  
Articulation and Alignment Resources for Elementary Administrators



**About this document**  
This document is designed to support schools and districts in their collaborative efforts with early learning and afterschool programs. It includes information on why high-quality early learning is critical for children from birth through third grade, as well as for their long-term student achievement. The document will also serve as a tool to facilitate conversations with partners, and help to identify an action plan for goals in ongoing work and implementation. Discussions can engage school and district leadership, teachers, grade level representatives, early childhood education and afterschool providers, the school site council, parents and parent organizations.

HeadStart Santa Clara County | Santa Clara County Office of Education | SJ 2020  
Catholic Charities of Santa Clara County | Choices for Children | WestEd | ES Institute | Partnership for Learning  
Estrella Family Services | Kids in Community | LRC | smart start | FIRST 5

# Sharing the Story

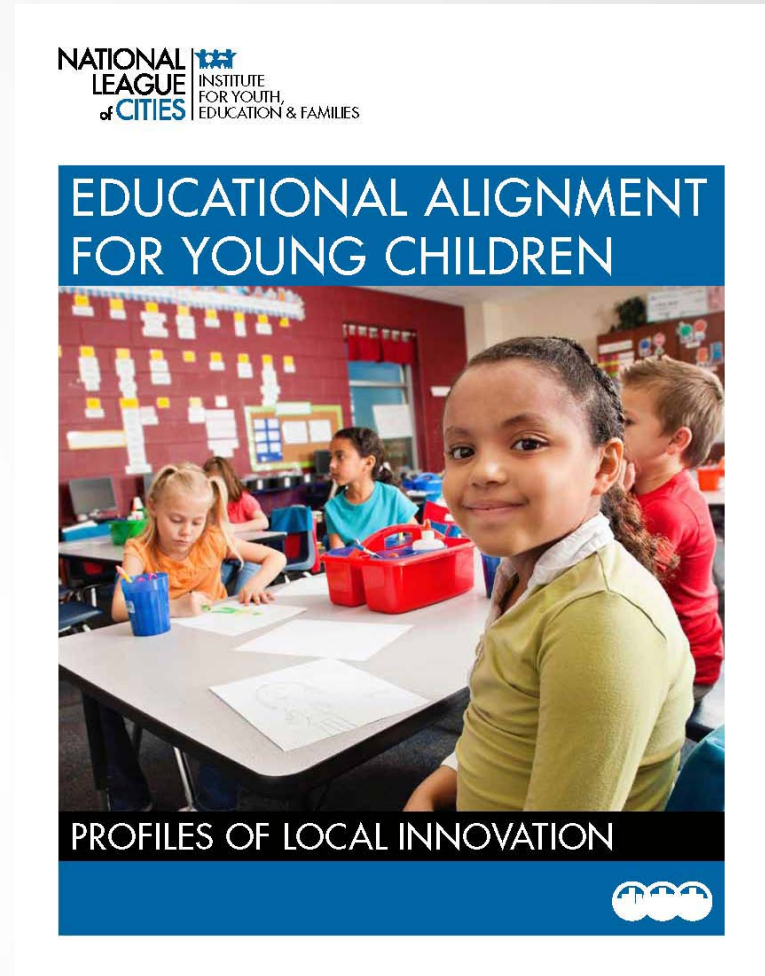
## Highlights and Future Directions

- Over 100 diverse stakeholders develop plan
- ELMP launched, event sponsored by Adobe Systems
- Working and advisory committees established
- Educare of California at Silicon Valley (ECSV): Invitation to apply

# Sharing the Story

## Highlights and Future Directions

- First year implementation underway, several goals achieved
- Santa Clara County leads state and local transitional kindergarten efforts
- City of San Jose one of five cities highlighted for early learning by National League of Cities



# Sharing the Story

## Highlights and Future Directions

- Over 90 partners remain engaged in ELMP implementation work
- State/Santa Clara County awarded Race to the Top – Early Learning Challenge Fund
- READy to SOAR launched (Campaign for Grade Level Reading)
- City of San Jose receives National Pacesetter Award for School Readiness



# Sharing the Story

## Highlights and Future Directions

- Public Awareness Strategies
  - Children's Summit
  - DRDP-SR Implementation Meeting
  - Children's Data Book
- Broad-Based Initiatives
  - Strong Start Early Learning Initiative
  - Family Engagement Impact Project
  - ECSV Capital Campaign and Media Event

# Sharing the Story

## Highlights and Future Directions

- Strategic Area Strategies
  - Family Engagement Institute
  - Family Engagement Impact Project



# Can I Answer Any Questions for You?



# Contact Information

Lisa Kaufman, Ph.D.

Director, Early Learning Services

Santa Clara County Office of Education

(408) 453-3606; [lisa\\_kaufman@sccoe.org](mailto:lisa_kaufman@sccoe.org)

For more information on the Early Learning  
Master Plan, please visit

[www.sccoe.org/depts/students/early-learning-services/Pages/elmp.aspx](http://www.sccoe.org/depts/students/early-learning-services/Pages/elmp.aspx)