

Data Privacy in the age of AI



We improve the lives of all kids and families by providing the trustworthy information, education, and independent voice they need to thrive in the 21st century.





Highlights

1. Data Collection by AI tools
2. Risks of Misuse
3. Impact on Youth
4. Practical Strategies



Our AI stance

AI literacy is not an elective

Humans are at the center any AI use

Educators need skills to navigate AI in the classroom

As AI evolves, so does the need to educate our students and families about use/misuse

The world is changing and teens see a role for adults in supporting their use of generative AI.

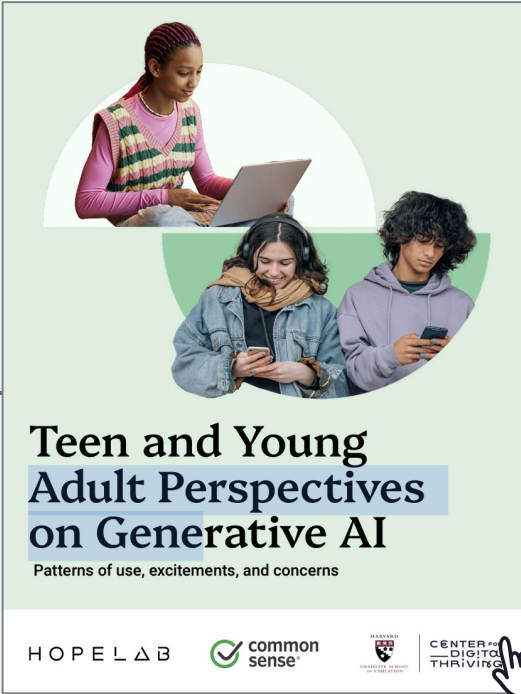
Teens want adults to know that they **use generative AI for schoolwork beyond cheating, though cheating does happen.**

Similarly, young people want adults to know about potential AI-related harms, such as those connected to **bullying and lying.**

Trends

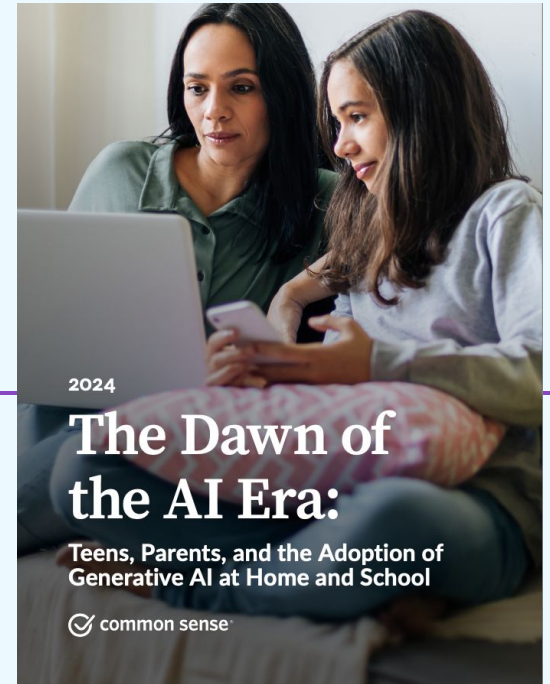
Research on AI

Our ongoing research and analysis includes perspectives from teens, parents, and educators articulating important considerations around the AI landscape.



Teen and Young Adult Perspectives on Generative AI
Patterns of use, excitements, and concerns

HOPE LAB common sense[®] HARVARD UNIVERSITY CENTER FOR DIGITAL THRIVING



2024

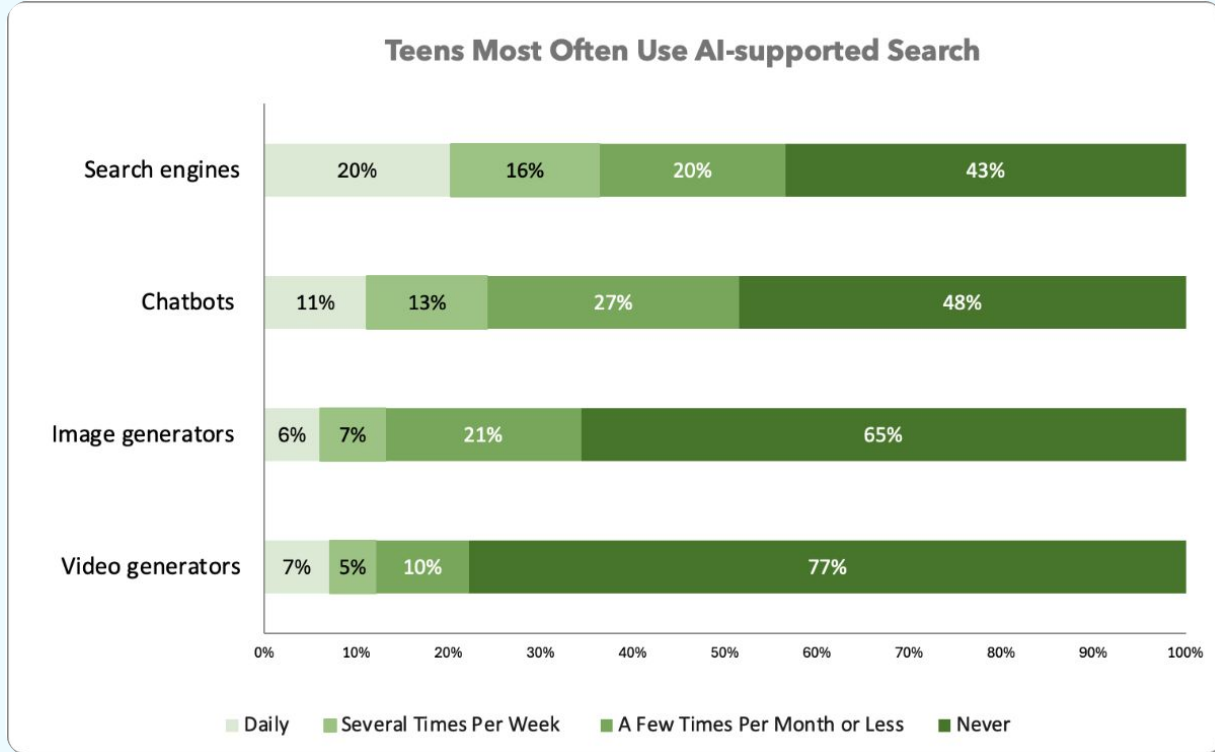
The Dawn of the AI Era:
Teens, Parents, and the Adoption of Generative AI at Home and School

common sense[®]

6. About 6 in 10 teens report either that their school has no rules for how generative AI can be used or that they're not sure if there are rules. And most parents say that schools have not communicated with families about gen AI policies.



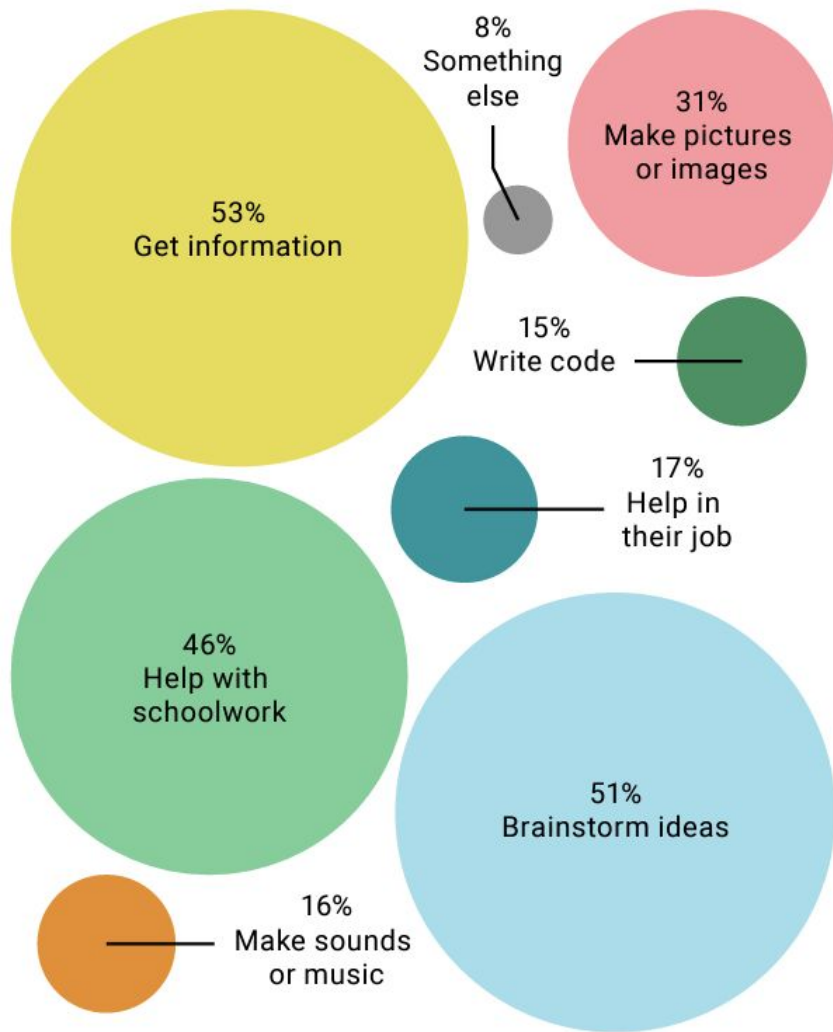
Seven in 10 teens age 13-18 have used at least one type of generative AI tool





Findings

Young people use AI to:

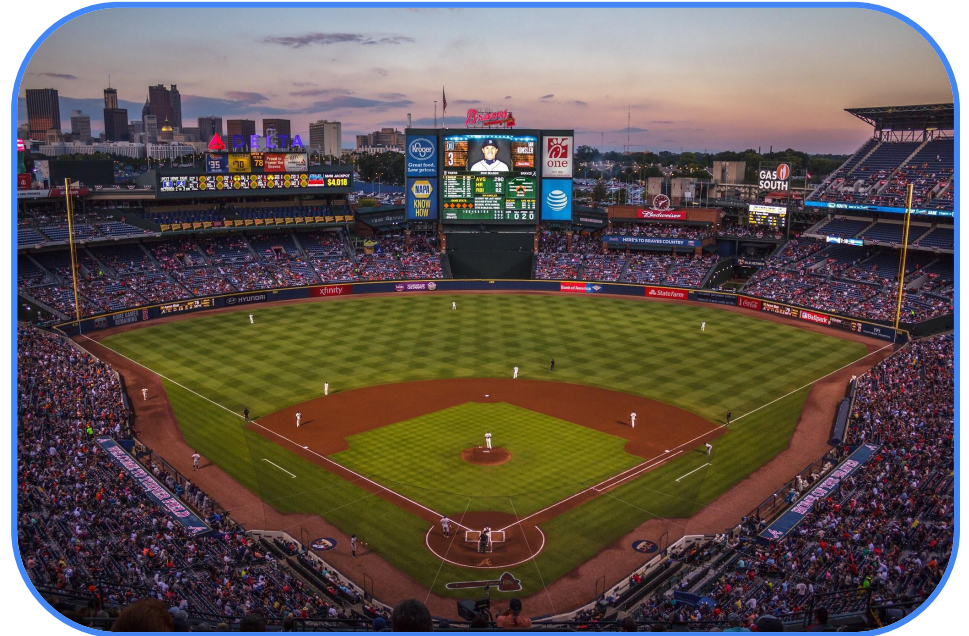


Everyday AI Use

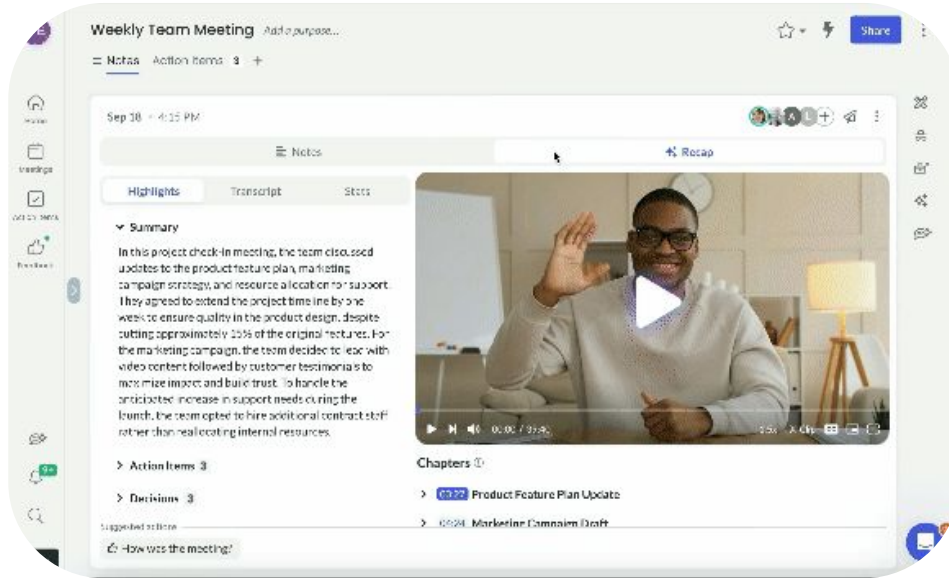
Easy to participate in data sharing

You are at a Giants game and the Jumbotron posts a QR code to project your phone camera live on screen

To participate, you are asked to scan a QR code for access to your camera & contacts



Helps ease meeting tasks



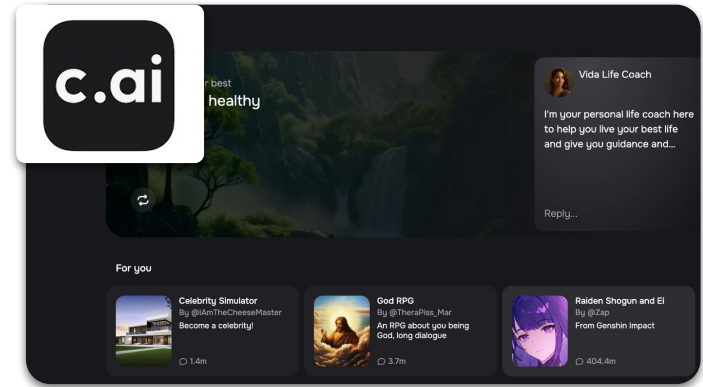
Your colleague uses an AI Notetaker in Zoom for every meeting, even ones they don't attend.

What potential privacy concerns should you be aware of?

Connect with your interests

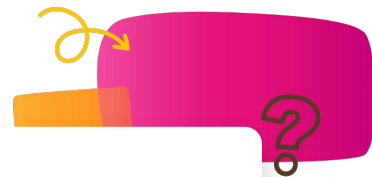
After reading your favorite Percy Jackson book, you log onto Character Ai to speak to Percy. In order to see him, you are asked to get passed his wizard guard,

How do you get past him?

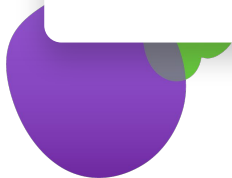




Pair share



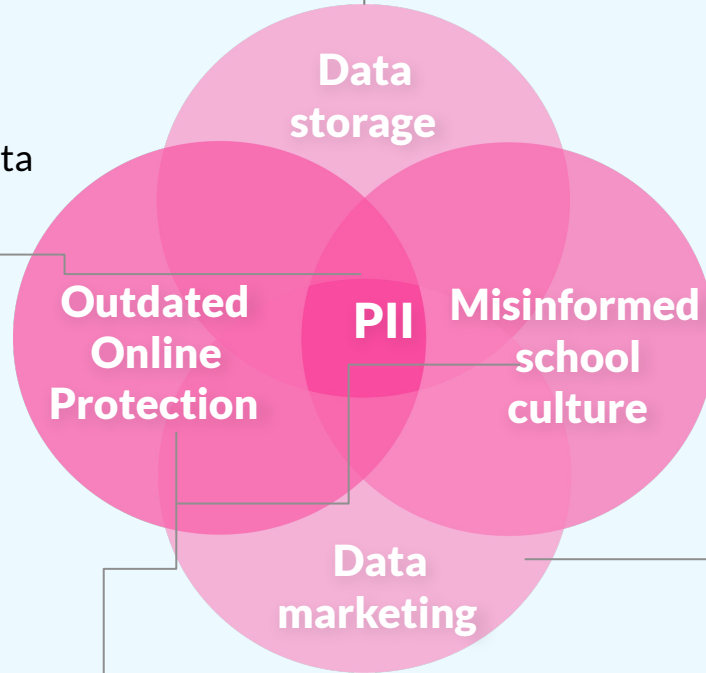
**How are AI-powered tools used in your life?
Share a recent example from your experience?**



the AI & Student Privacy Conundrum

Student information is sacred

From attendance to academic progress, we rely on student data to evaluate our impact



AI powered tools use data to both power their usage and sell information.

Student data is housed between outdated policy and misinformed school culture

Data is scattered

Data Captured	LMS & SIS (Canvas, Google Classroom, Power School, etc.)	ED Tech Tools (Quizlet, Ello, Dreambox, etc.)	Social Media in schools (Google Chats, Chatbot support, etc.)
Grades Attendance Demographics	X	X	
Engagement (Login frequency, Time on tasks, learning preferences,	X	X	X
User Behavior (Discussion, likes, reviews, chat history)		X	X



Privacy Concerns

Data can be **aggregated, stored,**
and **shared** without explicit
student or parental consent.

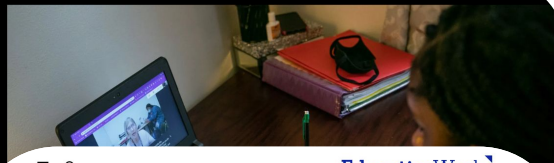
Potential **misuse by third
parties for non-educational
purposes.**



Breaches, Targeted Ads, Oh my

Tech

Proctorio Is Using Racist Algorithms to Detect Faces



EducationWeek

A Massive Data Leak Exposed School Lockdown Plans. What Districts Need to Know

By Arianna Prothero — January 24, 2024 5 min read



Think Global Health

GOVERNANCE

The Costs of Targeted Advertising on Children and Mental Health

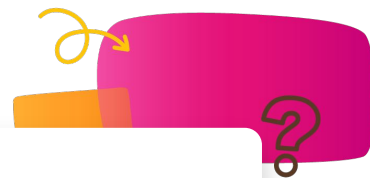
A high school senior implores policymakers to emphasize the safety of children as social media evolves





Take a stand

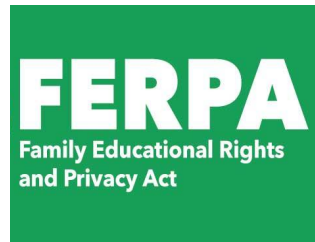
**When it comes to AI-powered tools,
what types of student data are you most
concerned about being compromised?**



Protections



Requires parental consent
for the collection of personal
information for youth under
13



Protects the privacy of
student educational records
in schools



Two students were writing a history paper last year when they used AI for some of their research notes – not to write the paper itself. A teacher discovered the AI usage, and the students were given a **detention**, **kept off the National Honor Society**, and **given a zero** on that portion of the project. But it was such a large portion of their grade that this straight A student got a C+ for the class.

Student Perspective

"The only time AI use was explicitly discussed was in another class. In that class, AI use was allowed for general assignments, though on the exam, essays would be written by hand,"

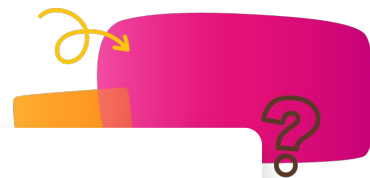
School Perspective

While there was no explicit mention of AI usage in the handbook at the time, students are given guidelines on AI in the ELA classes, which is expected to apply in other classes.





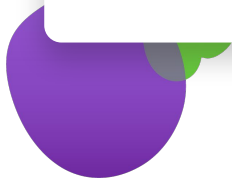
Take a stand

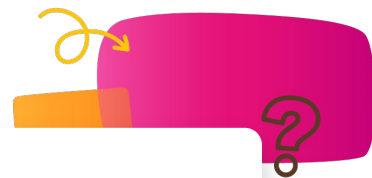


School

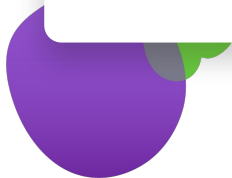
not

Should ~~student~~ be punished for using AI?






Is there enough transparency around how AI is used in schools?




Practical Strategies




Sample AI one pager

 common sense education

 YOUR SCHOOL LOGO HERE

AI Initiative

Overview
Use this space to share a brief narrative, describing how you incorporate AI usage in your community



AI terms we use **AI Tools We Use & Use Cases** **Resources for More Information**

Chatbot Automated systems that interact with students and educators, answering questions and providing feedback		
---	--	--





Create your own Chatbot

Custom Chatbots built by Educators

Name of Tool:

[Playlab.AI](https://playlab.ai)

Is it Safe:

Yes- It's intended for educators

How can you use it to help X with his sample [SEL bot](#)

The screenshot shows the 'Explore' page on the Playlab AI platform. The page has a navigation bar with 'Playlab', 'Apps', 'My Activity', and 'Explore' (which is underlined). A circular profile icon for 'KRP' is in the top right. Below the navigation is a large 'Explore' header with a colorful gradient background. Underneath is a 'Featured' section with a grid of app cards. Each card includes an educator's initials and name, the app title, a brief description, and a list of tags. The first card is by Adam Strom (AS) for 'The Re-Imagining Migration Coa...' with tags 'Featured', 'Differentiation', 'Equity', and 'Planning'. The second card is by Wyman Khuu (WK) for 'Model UN Simulator' with tags 'Featured' and 'Humanities'. Below these are two more cards, one by Jennie (J) and one by Gretchen A Gibbs (GAG).

When Vetting an AI tool...

In addition to vetting AI tools on privacy and costs, consider following this four point model instead:

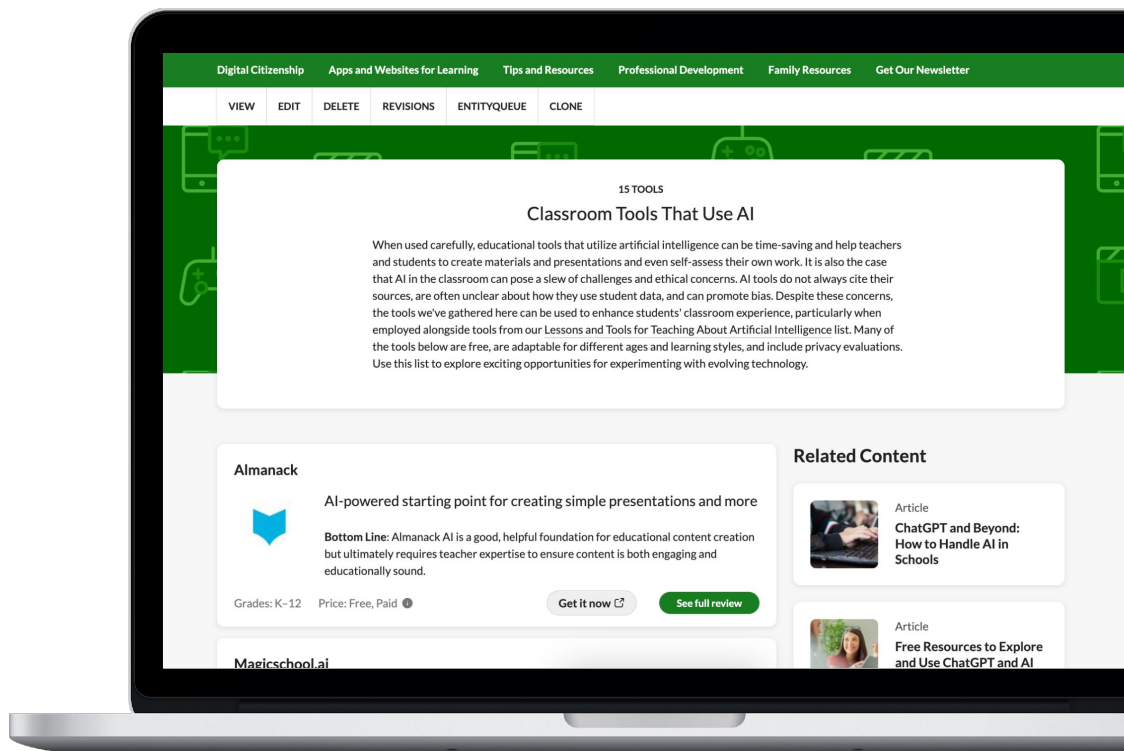
- **Learn**- about tool and what information it collects
- **Try**- testing the tool with varied audiences
- **Teach**- your community about tool and use cases
- **Apply**- tool in use cases and document impact



Classroom Tools that Use AI

When used carefully, educational tools that utilize artificial intelligence can be time-saving and help teachers and students to

- Create learning materials
- Draft presentations
- Self assess their own work



Practical Steps to Address Privacy

Simple ways to protect student data include:

- Data being collected
- Data being shared
- Creating safer settings



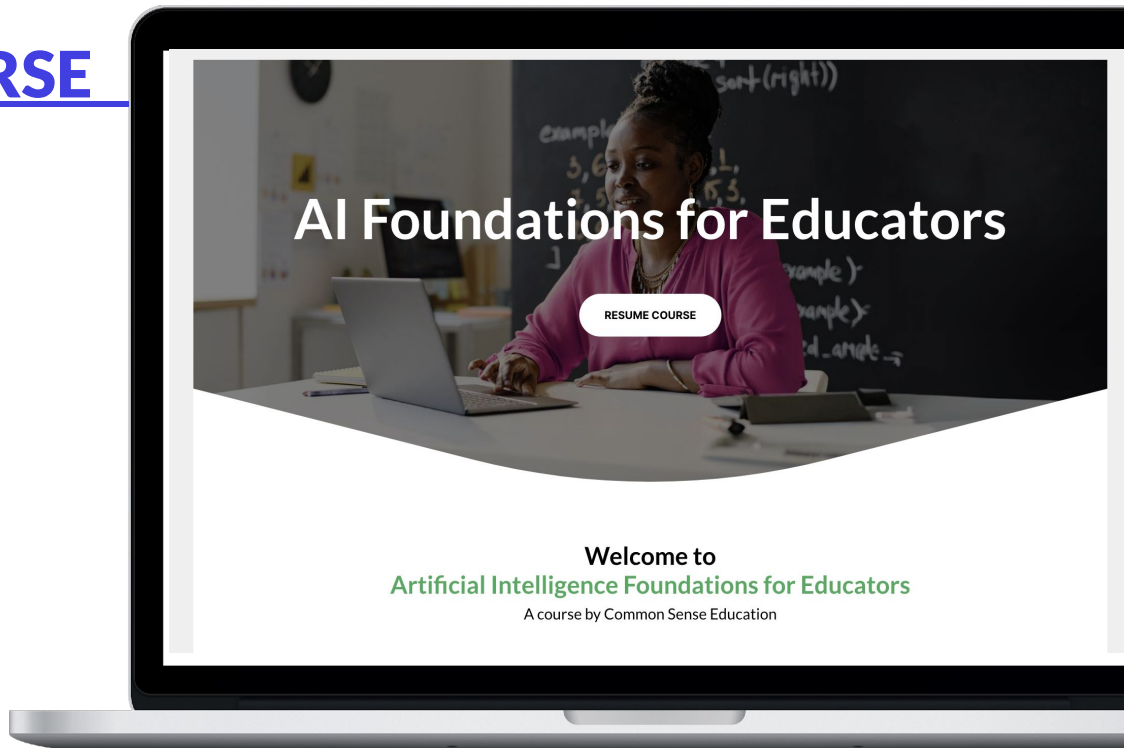


Self Paced Course

AI FOUNDATION COURSE

3 Essential Questions

1. What is AI and how does it work?
2. How might AI impact teaching and learning?
3. What are the best practices for using generative AI ethically and responsibly?





EDUCATIONAL RESOURCES

Lesson 1

What Is AI?

What is artificial intelligence and what are its potential benefits and drawbacks?

GRADE 6–12
TIME 15 mins.

INCLUDES
Video

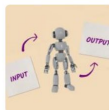


Lesson 2

How Is AI Trained?

How does data determine what artificial intelligence can do?

GRADE 6–12
TIME 20 mins.



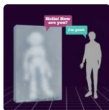
Lesson 3

AI Chatbots: Who's Behind the Screen?

Why are AI chatbots designed to sound so human-like, and how can that impact our everyday lives?

GRADE 6–12
TIME 15 mins.

INCLUDES
Video



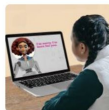
Lesson 4

AI Chatbots & Friendship

How can AI chatbots impact our idea of friendship?

GRADE 6–12
TIME 15 mins.

INCLUDES
Dilemma Discussion



AI Literacy Lessons link



Lesson 5

Understanding AI Bias

How does AI bias happen?

GRADE 6–12
TIME 20 mins.



Lesson 6

How AI Bias Impacts Our Lives

What are the impacts of AI bias?

GRADE 6–12
TIME 20 mins.

INCLUDES
Dilemma Discussion



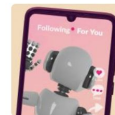
Lesson 7

AI Algorithms: How Well Do They Know You?

How does artificial intelligence influence what we see online?

GRADE 6–12
TIME 20 mins.

INCLUDES
Video



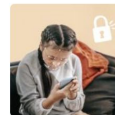
Lesson 8

Facing Off with Facial Recognition

What are the benefits and risks of facial recognition?

GRADE 6–12
TIME 20 mins.

INCLUDES
Dilemma Discussion



GRADES 6-12

AI Chatbots & Friendship

 common sense education®





Essential Question

How can *AI chatbots* affect our idea of friendship?



 common sense education®

AI Literacy: A Common Sense Guide to Our Resources



Overview

AI Literacy refers to our **ability to understand how AI works** and to **think critically** about the **ethical and societal consequences** for how we use it. Recognizing the varying community needs of our schools to address the role of AI in our lives, Common Sense Education has gathered our AI resources into one place for your ease of reference.

Research & Professional Development:

- Learn more about the [Common Sense research](#) that informs our work in AI and Digital Literacy
- Access the Common Sense [AI resources deck](#) to share and train others
- Complete **professional learning**, from live [webinars](#) to an [asynchronous AI Foundations course](#)

AI Literacy Lessons for the Classroom

Quick, grab-and-go lessons for educators to help middle and high school-aged students think critically about AI can be found in our [AI Literacy Collection](#).

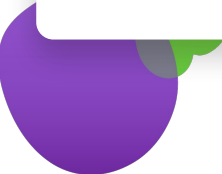
Explore Trusted Instructional Tools Leveraging AI

- [Classroom Tools that Use AI](#)
- [Lessons and Tools for Teaching About Artificial Intelligence](#)
- [Common Sense Selections for Learning](#)
- [\(Article\) Chat GPT and Beyond: How to Handle AI in Schools](#)





What creative solutions will schools adopt to leverage AI for educational benefits while ensuring students' privacy is fully protected?





Thank you

Please take our survey, so we can keep opportunities like this going!

[1 min Survey](#)

Let's connect

Jamie Nunez

Western Regional Education Manager
Common Sense

 [Connect and say hello](#)

